



Delectable Mountains

Fabrics by Katny Hall with Jo Morton for the
International Quilt Study Center



makower uk®

1384 Broadway • New York, NY 10018
(800) 223-5678 • www.andoverfabrics.com

Quilt designed by Gail Kessler
Finished size: 70¾" x 70¾"

8/10/11

Delectable Mountains

Fabrics by Kathy Hall with Jo Morton for
the International Quilt Study Center

Fabrics shown are 20% of actual size.

Fabrics used in featured quilt pattern
are indicated in red

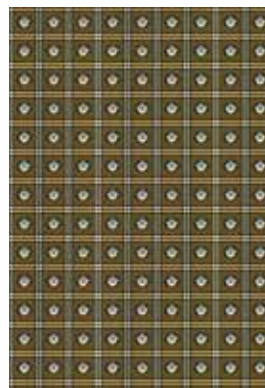
Andover
Fabrics™
makower uk®



***5541-B** 2¼ yds (includes binding.
See chart for backing yardage)



5541-N



5543-N



5543-RH



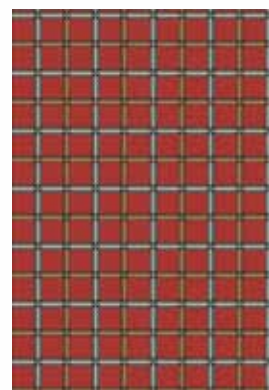
5542-B 1¼ yds



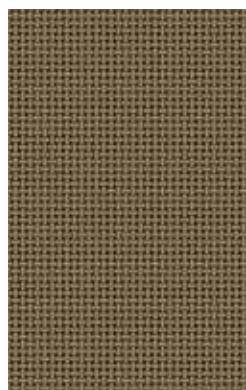
5542-N ⅞ yd



5544-B



5544-RH



5546-N



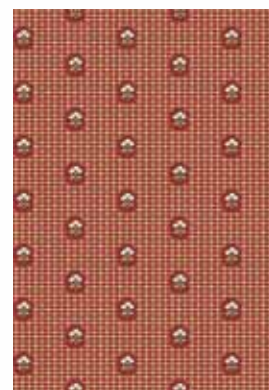
5547-B



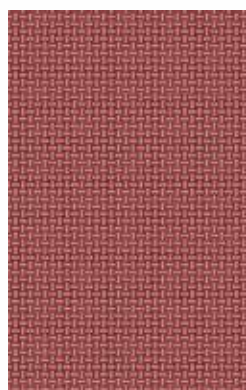
5548-N



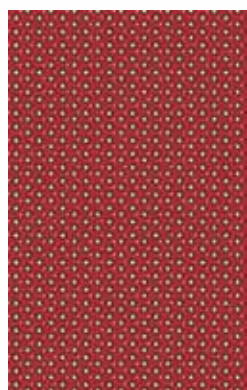
5545-B



5545-RH ⅝ yd



5546-RH



5547-RH 1⅞ yds



5548-BH ¾ yd

Bolts needed to cut project kits

| Fabric | 10 kits | 20 kits | 30 kits |
|-----------------------|---------|---------|---------|
| 5541-B | 2 | 4 | 5 |
| 5542-B | 1 | 2 | 3 |
| 5542-N | 1 | 2 | 2 |
| 5545-RH | 1 | 1 | 2 |
| 5547-RH | 1 | 2 | 3 |
| 5548-BH | 1 | 1 | 1 |
| Backing Fabric | | | |
| *5541-B | 4 | 7 | 10 |

**Yardage needed for backing (4½ yards per kit)*